



Operational setup guide post-installation

A Practitioners Guide to ensuring you
get the maximum value from the
data collected by Centrix WorkSpace

Overview

WorkSpace iQ and Discovery by default have no definition rules for what is to be transferred to the Management reporting database. To achieve this you need to conduct a set of steps to classify in the relevant devices and applications to get the most out of WorkSpace iQ and Discovery

1. Classify the costs and tariffs for applications to enable costs quantifications of used and unused software and determine scope of applications for next step
2. Classify the application definitions. Define the EXE files you are interested in specifically and their relationship to packages
3. Assign the various device chassis types to device categories (Standard, mobile, secure, special)
4. Classify the rules that define applicability for virtualization consideration
5. Define the configuration settings for virtualization planning
6. Define global configuration settings
7. Define the groupings for users

Classifying application costs and tariffs

Platform	Package	Manufacturer	Version	License Type	Annual License	Tariff	Entitlement	Include in Discovery Planning
Discovery	Microsoft Visu...	Microsoft Corporation	10.0.30319	Per named user licen...	\$499.00	\$499.00	10	<input checked="" type="checkbox"/>
Discovery	Sage 50 Forec...	Sage (UK) Limited	13.0.0	Per named user licen...	\$452.00	\$452.00	3	<input type="checkbox"/>
Discovery	Adobe Acrobat...	Adobe Systems	8.1	Per named user licen...	\$60.00	\$60.00	2	<input type="checkbox"/>
Discovery	ANTS Memory...	Red Gate Software Ltd	2.0.49	Per named user licen...	\$395.00	\$395.00	1	<input type="checkbox"/>
Discovery	ANTS Perform...	Red Gate Software Ltd	6.0.0.1312	Per named user licen...	\$395.00	\$395.00	1	<input type="checkbox"/>
Discovery	SmartAssembl...	Red Gate Software Ltd	5.1.0.3	Per named user licen...	\$545.00	\$545.00	1	<input type="checkbox"/>
Discovery	Exception H...	Red Gate Software Ltd	2.1.0.2	Per named user licen...	\$295.00	\$295.00	1	<input type="checkbox"/>
Discovery	Adobe Acrobat...	Adobe Systems	9.4.1	Per named user licen...	\$60.00	\$60.00	2	<input type="checkbox"/>

Select the license model used for the software you are interested in

Define the costs to IT and the potential pricing to the business

Select the license model used for the software you are interested in

Check this for all applications you set costs and tariffs for

Must do!

The first step is to classify the applications license models, costs, tariffs and entitlements. By default all license types are set to free which means that entitlement, cost and tariff are ignored in reporting within WorkSpace IQ. Supported licensing models are device, user, concurrent, per server and corporate.

It is good practice to set the check box for “Include in Discovery Planning” to on for those applications for which you enter classification information. This will be useful once you start to look at desktop transformation in more detail

This step helps focus in on the high value application investments. This data is used in quantifying the potential savings value on applications based on usage data collected.

Classify the executables per application

The screenshot shows a software management application with three main panels. The top panel, titled 'Packages', contains a table of software packages. The middle panel, titled 'Applications', contains a table of applications. The bottom panel, titled 'Applications', contains a table of executables. A blue callout box points to the 'Packages' table with the text: 'Select the applications that you set costs and tariffs for and the EXE files will be shown in the panels at the bottom'. Two blue curved arrows point from the 'Applications' table to the 'Applications' table, with a central blue callout box containing the text: 'Drag and drop the EXE files that you want to classify as being critical to usage tracking of packages'. A red starburst graphic in the bottom right corner contains the text: 'Must do!'.

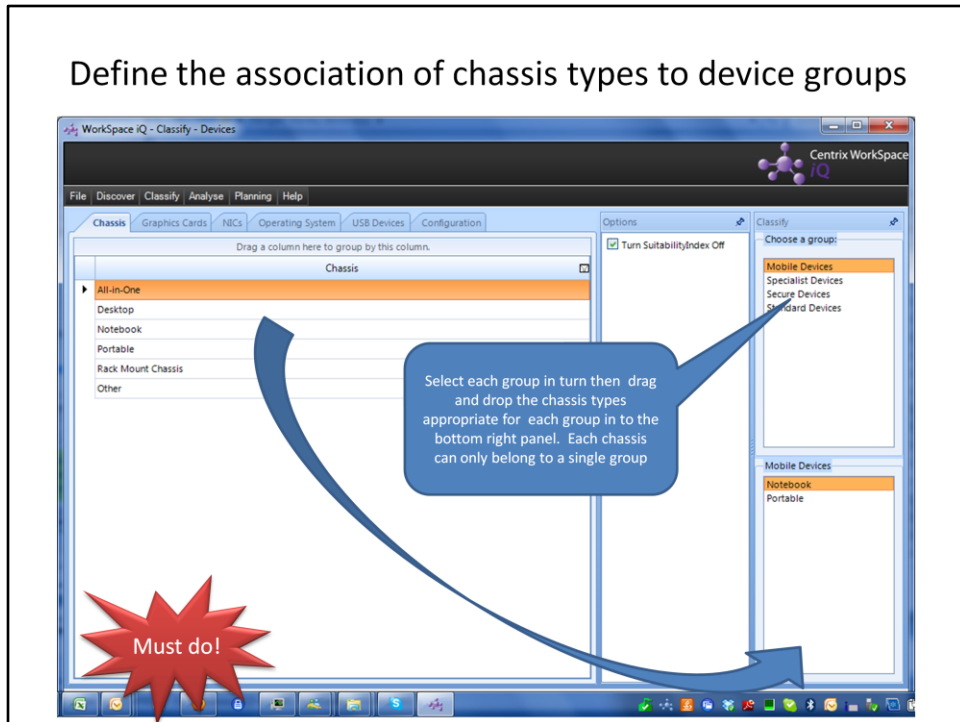
Name	Description	Version
Microsoft Office 2010 (x64) (en-us) (en-us)	Microsoft Office 2010 (x64) (en-us) (en-us)	15.0.0.5099
Microsoft Office 2010 (x64) (en-us) (en-us)	Microsoft Office 2010 (x64) (en-us) (en-us)	15.0.0.5099
Microsoft Office 2010 (x64) (en-us) (en-us)	Microsoft Office 2010 (x64) (en-us) (en-us)	15.0.0.5099
Microsoft Office 2010 (x64) (en-us) (en-us)	Microsoft Office 2010 (x64) (en-us) (en-us)	15.0.0.5099
Microsoft Office 2010 (x64) (en-us) (en-us)	Microsoft Office 2010 (x64) (en-us) (en-us)	15.0.0.5099
Microsoft Office 2010 (x64) (en-us) (en-us)	Microsoft Office 2010 (x64) (en-us) (en-us)	15.0.0.5099
Microsoft Office 2010 (x64) (en-us) (en-us)	Microsoft Office 2010 (x64) (en-us) (en-us)	15.0.0.5099
Microsoft Office 2010 (x64) (en-us) (en-us)	Microsoft Office 2010 (x64) (en-us) (en-us)	15.0.0.5099
Microsoft Office 2010 (x64) (en-us) (en-us)	Microsoft Office 2010 (x64) (en-us) (en-us)	15.0.0.5099
Microsoft Office 2010 (x64) (en-us) (en-us)	Microsoft Office 2010 (x64) (en-us) (en-us)	15.0.0.5099

Name	Description	Version
Microsoft Office 2010 (x64) (en-us) (en-us)	Microsoft Office 2010 (x64) (en-us) (en-us)	15.0.0.5099
Microsoft Office 2010 (x64) (en-us) (en-us)	Microsoft Office 2010 (x64) (en-us) (en-us)	15.0.0.5099
Microsoft Office 2010 (x64) (en-us) (en-us)	Microsoft Office 2010 (x64) (en-us) (en-us)	15.0.0.5099
Microsoft Office 2010 (x64) (en-us) (en-us)	Microsoft Office 2010 (x64) (en-us) (en-us)	15.0.0.5099
Microsoft Office 2010 (x64) (en-us) (en-us)	Microsoft Office 2010 (x64) (en-us) (en-us)	15.0.0.5099
Microsoft Office 2010 (x64) (en-us) (en-us)	Microsoft Office 2010 (x64) (en-us) (en-us)	15.0.0.5099
Microsoft Office 2010 (x64) (en-us) (en-us)	Microsoft Office 2010 (x64) (en-us) (en-us)	15.0.0.5099
Microsoft Office 2010 (x64) (en-us) (en-us)	Microsoft Office 2010 (x64) (en-us) (en-us)	15.0.0.5099
Microsoft Office 2010 (x64) (en-us) (en-us)	Microsoft Office 2010 (x64) (en-us) (en-us)	15.0.0.5099
Microsoft Office 2010 (x64) (en-us) (en-us)	Microsoft Office 2010 (x64) (en-us) (en-us)	15.0.0.5099

Name	Description	Version
Microsoft Office 2010 (x64) (en-us) (en-us)	Microsoft Office 2010 (x64) (en-us) (en-us)	15.0.0.5099
Microsoft Office 2010 (x64) (en-us) (en-us)	Microsoft Office 2010 (x64) (en-us) (en-us)	15.0.0.5099
Microsoft Office 2010 (x64) (en-us) (en-us)	Microsoft Office 2010 (x64) (en-us) (en-us)	15.0.0.5099
Microsoft Office 2010 (x64) (en-us) (en-us)	Microsoft Office 2010 (x64) (en-us) (en-us)	15.0.0.5099
Microsoft Office 2010 (x64) (en-us) (en-us)	Microsoft Office 2010 (x64) (en-us) (en-us)	15.0.0.5099
Microsoft Office 2010 (x64) (en-us) (en-us)	Microsoft Office 2010 (x64) (en-us) (en-us)	15.0.0.5099
Microsoft Office 2010 (x64) (en-us) (en-us)	Microsoft Office 2010 (x64) (en-us) (en-us)	15.0.0.5099
Microsoft Office 2010 (x64) (en-us) (en-us)	Microsoft Office 2010 (x64) (en-us) (en-us)	15.0.0.5099
Microsoft Office 2010 (x64) (en-us) (en-us)	Microsoft Office 2010 (x64) (en-us) (en-us)	15.0.0.5099
Microsoft Office 2010 (x64) (en-us) (en-us)	Microsoft Office 2010 (x64) (en-us) (en-us)	15.0.0.5099

Once you have identified the high value software packages, you should classify the EXE files within the package that you are interested in. Many packages contain “helper” applications that are secondary to the core EXE files of the package. You have the choice of tracking detailed usage of all EXE files or a subset. Simply use drag and drop to create the list of key EXE files in the central panel of the UI.

Define the association of chassis types to device groups

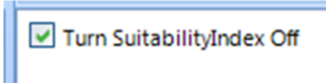


It is also important to define the classification rules for hardware. The first step is to associate the list of chassis types (these are automatically collected) to the usage models defined (structured, mobile, secure, special hardware).

This step helps set a scope for reports such as a mobile assessment which looks at the viability and use of those devices assigned to the mobile usage model to determine if they are ever used in a disconnected or internet only connected state

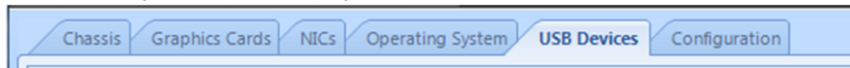
Select the scope for virtualization planning

- Ensure that you select devices, applications and executables in scope definition

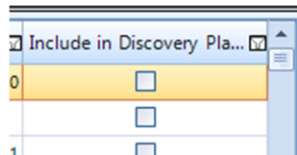


Turn SuitabilityIndex Off

- Ensure you select all aspect of device attributes from each tab



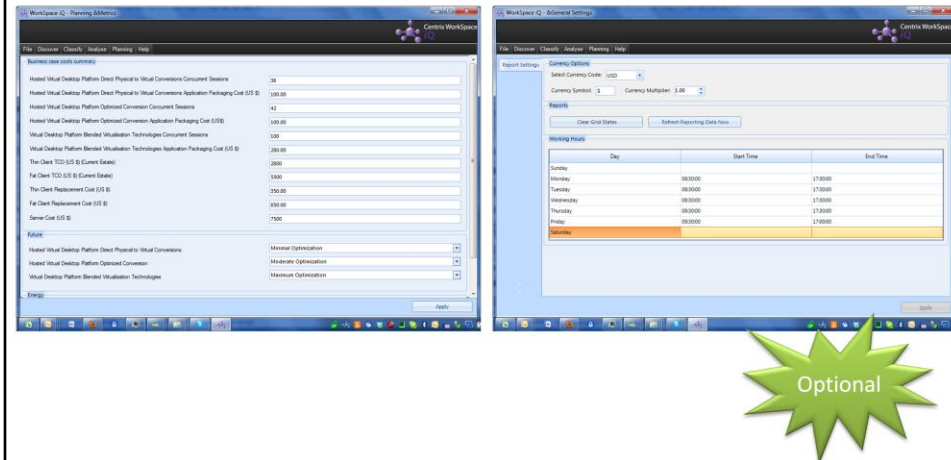
- In application costs and tariffs ensure you select the appropriate applications. If in doubt select a broader range



If you are particularly interested in virtualization assessment you will need to classify the attributes of hardware that determine suitability for inclusion in virtualization planning. These include chassis type, graphics card type, NIC count, Operating System version or USB device types .

Define the core configuration settings

- Access these from File...Settings menu options



Additionally for virtualization planning, you have the opportunity to define key metrics for the planning assessment. These include server scalability(Supported user count), costs, application packaging costs, device replacement costs and metrics governing the degree of optimization in managing virtual environments.