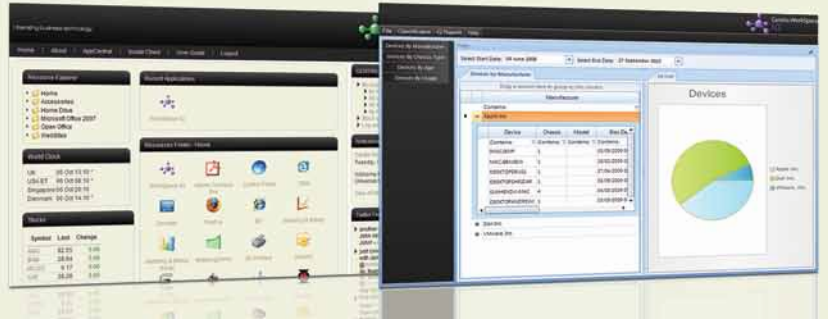


 **Centrix
WorkSpace™ 5.0**



Centrix WorkSpace is a unified end-user computing platform that enables organizations to reduce the cost of delivering applications and content whether physical, virtual, hosted, or web.

Centrix WorkSpace consists of:



Centrix WorkSpace iQ

Collects and analyzes inventory and usage data on hardware and software assets from both physical desktops and servers, as well as virtual machines (e.g. VMware, Citrix) to provide the necessary intelligence to align resources with need, increase service levels and save IT costs.

WorkSpace iQ provides rich reporting on assets, summary and actionable reporting on IT costs savings and trending on the usage of software and resources across all delivery platforms. This information about the performance, demand and cost profiles across all platforms enables not only optimization, but also informed, intelligent platform choices to be made. The resulting information delivered provides a cross-platform single view of the usage of applications whatever the underlying application delivery architecture.

Centrix WorkSpace iQ can help you unlock savings on virtualization, software licensing optimization, hardware purchasing justifications, power consumption/Green IT initiatives and many other areas of potential IT optimization.

Centrix WorkSpace Discovery

Free of charge package delivering an endpoint assessment of current client hardware and software.

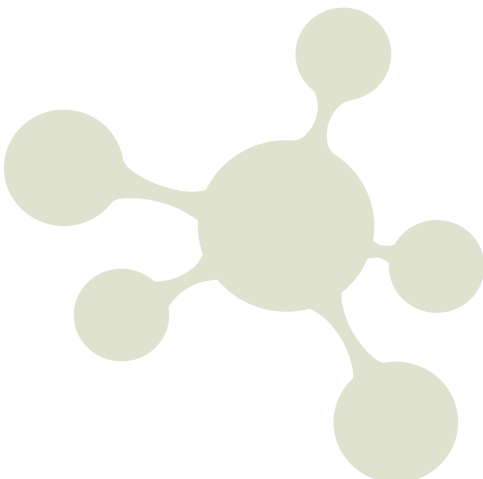
WorkSpace Discovery provides broad visibility on the current hardware and software assets and their levels of use through a set of graphically rich easy to understand reports. This allows IT departments to understand the scope of opportunity for desktop virtualization, software licensing and deployment optimization, hardware replacement and upgrade needs, power consumption optimization and Green IT.

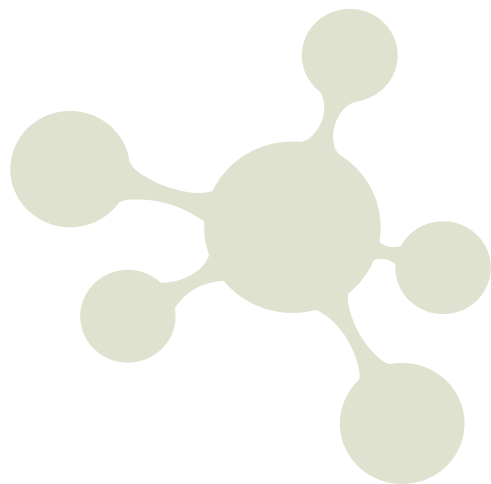
Centrix WorkSpace Universal

Unifies the delivery of applications, desktops, content and other resources and presents them to users in a consistent easily accessible single user interface.

Dependent on business need, this interface can be customized and easily branded or it can be Flash-based for a more Windows-like experience. Both these simple to use and intuitive interfaces provide access to all services, as well as powerful navigation and dynamic search features. This ensures that available resources can be found quickly and easily, wherever they happen to be hosted across the IT infrastructure. The solution can also be customized and personalized to meet the needs of individuals or groups across the organization, while still providing centralized control and management for the IT team.

WorkSpace Universal enables IT departments to undertake the transition of service delivery from local to private cloud to public cloud while maintaining consistency of user experience, resource accessibility, identity management and provisioning of new services to users.





Software requirements for Centrix WorkSpace Discovery and Centrix WorkSpace iQ

WorkSpace *Discovery* consists of a server to collect, store and report on collected data, and a collection of lightweight endpoint agents to capture and deliver hardware, software and usage information to the server.

Target operating systems for WorkSpace iQ and Discovery

Operating System	iQ Servers	Discovery Server	Centrix Agent
Microsoft Windows XP (All Editions)	● ⁽¹⁾	●	●
Microsoft Windows Vista (All Editions)	● ⁽¹⁾	●	●
Microsoft Windows 7 (All Editions)	● ⁽¹⁾	●	●
Microsoft Windows 2003 Server (All Editions)	●	●	●
Microsoft Windows Server 2008 (All Editions – x32 and x64)	●	●	●

Notes:

⁽¹⁾ For scalability and connectivity reasons it is recommended to install iQ server components on Windows Server operating systems.

SQL server support for WorkSpace iQ and Discovery

SQL Server 2008 or 2008 R2	Discovery	iQ
Data center		●
Enterprise		●
Standard		●
Web		
Workgroup		
Express	●	

Software requirements for Centrix WorkSpace Universal

Target operating systems for Universal Server components

Operating System	Supported Web Server	Supported SQL Versions
Windows 2003	Microsoft IIS 6.0	SQL Server 2008 Enterprise Edition
Windows 2008	Microsoft IIS 7.0 or above	SQL Server 2008 Enterprise Edition

Target operating systems and browsers for Universal Client components

Operating System	Supported Browsers
Microsoft Windows Operating System family	Microsoft Internet Explorer 6.0 and later Mozilla Firefox 2.0 and later
Apple OS X operating system family version 10.4 or later	Apple Safari 3.0 and later
Linux (Common distributions)	Mozilla Firefox 2.0 and later

Note:

For use of the rich user interface a local installed version of Adobe Flash version 9.0.48 or later is required.

Contact:

+44 (0)1635 239 800
sales@centrixsoftware.com
www.centrixsoftware.com

Unified end-user computing

Centrix Software provides solutions that optimize the way IT infrastructures deliver applications and content; whether physical, virtual, hosted or web. Headquartered in Newbury, Berkshire, Centrix Software's customers include leading organizations in banking and securities, insurance, telecommunications, retail, manufacturing, pharmaceutical, energy and utilities, and within public sector. Centrix Software's solutions are available through a network of value-add partners.