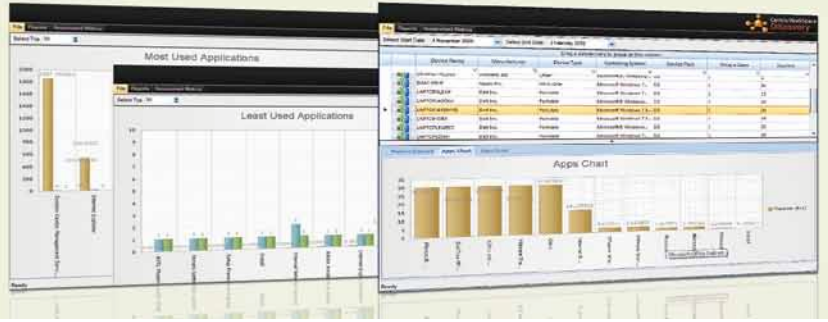


 **WorkSpace
Discovery™**



WorkSpace Discovery is a free of charge package that delivers an endpoint analysis of current client hardware and software.

It provides broad visibility on installed hardware and software assets and their levels of use through a set of graphically rich, easy to understand reports. This allows IT departments to understand the scope of opportunity for desktop virtualization, software licensing and deployment optimization, hardware replacement and upgrade needs, power consumption optimization and Green IT, and other desktop transformation initiatives.

WorkSpace Discovery Key Features

Savings Dashboards. Whether you are interested in optimizing hardware usage, mobile and remote access needs or power consumption for green IT initiatives, Centrix WorkSpace Discovery provides the intelligence on the degree of efficiency and use of these precious and costly resources.

Virtualization Planning. Most organizations are considering use of virtualized applications and desktops and there is a proliferation of technology choice. WorkSpace Discovery can help businesses understand what is the most cost effective approach to virtualization (application virtualization, desktop virtualization, or even blends of these), who are the most viable candidates for virtualization and what the summary financial impact will be of implementing virtualization.

Desktop Transformation intelligence. Whether you are considering an OS migration or looking to refresh some or all of your devices, WorkSpace Discovery can provide you with the intelligence to increase the effectiveness of these initiatives. WorkSpace Discovery provides detailed information on the age and specification of machines, identifies which have the least memory, smallest disk space and slowest CPU, as well as providing an inventory of applications installed and in use on individual machines. This gives you the IT intelligence to form the appropriate scope for these projects.

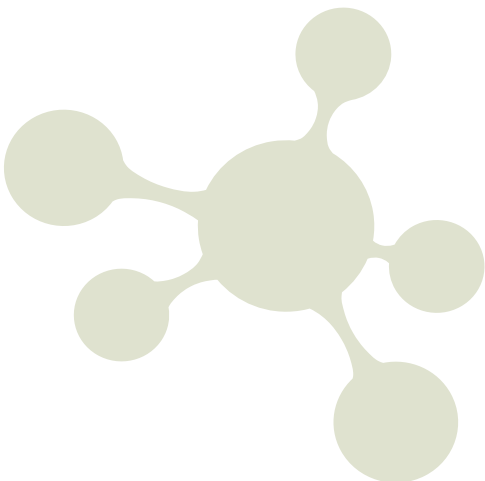
Hardware Inventory. In order to provide the intelligence on virtualization, desktop transformation and server analytics, WorkSpace Discovery collects a wealth of information about the hardware platform that a desktop resides on, including; how many CPUs and cores, how much memory and disk, manufacturer specifications, type of chassis, operating system version and service pack level, USB devices, graphics card capability, number of NICs and age of device. WorkSpace Discovery provides comprehensive reporting on these assets.

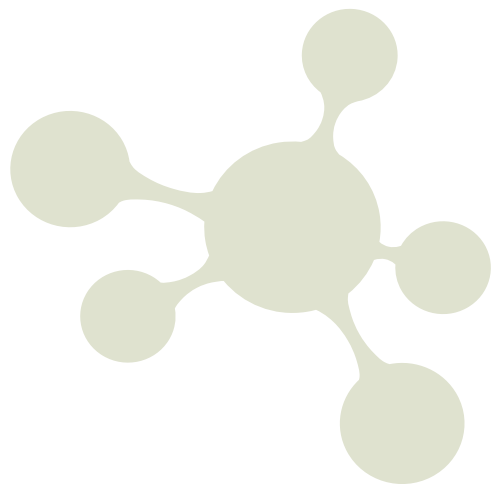
Software Inventory. Software assets are captured by WorkSpace Discovery. Reports provide visibility of the installed software packages on each device, including; ISV, package and application details, and .exe files and versions. All of this information helps businesses ensure license compliance and liability, vendor audit reporting, optimal renewals negotiation, desktop image rationalization, application version consistency and much more.

Tracking the addition and removal of hardware. The addition or removal of hardware components is clearly visible to IT staff with WorkSpace Discovery. It is easy to identify what has changed in the environment and when.

Allows multiple IT Admin users to centrally monitor and report on hardware and software inventory, and virtualization planning.

Automatically alerts users to new reports and product updates. Easily allows staging and deployment of these out to the correct components in the architecture.





Time and resource filtered reporting. The vast majority of reports in WorkSpace Discovery allow you to set the time period and the devices, applications, or users you are interested in including into a report. This allows specific targeted reporting and clearly actionable data.

Collect the detail but filter to the required answer. In its operational database WorkSpace Discovery collects a wealth of detail which is extremely granular. Automated and user controlled filters allow reports to reflect specific details. For example, if you are interested in Microsoft Office but only the core applications (Word, Excel, Outlook, PowerPoint) then it is easy to filter out details on all of the additional helper applications that come free with Microsoft Office.

Smart WorkSpace agent. Discovery services are designed to help partners and customers gain detailed information about the end devices currently located within the enterprise. The agent is easy to distribute via Microsoft Group Policy, Altiris deployment or Citrix Receiver. It can be pre-configured or automatically find its configuration for reporting back to a data collection point.

Applies intelligence to the collected data from the existing device estate and produces detailed reports to provide information designed to aid with the planning and optimization of application and desktop delivery including virtualization.

WorkSpace Discovery System Requirements

WorkSpace Discovery consists of server infrastructure to collect store and report on collected data, and a collection of lightweight endpoint agents to capture and deliver hardware, software and usage information to the server.

Target operating systems for WorkSpace Discovery

Operating System	Discovery Server
Microsoft Windows XP (All Editions)	•
Microsoft Windows Vista (All Editions)	•
Microsoft Windows 7 (All Editions)	•
Microsoft Windows 2003 Server (All Editions)	•
Microsoft Windows Server 2008 (All Editions – x32 and x64)	•

SQL server support for WorkSpace Discovery

SQL Server 2008 or 2008 R2	Discovery
Data center	
Enterprise	
Standard	
Web	
Workgroup	
Express	•

Contact:

+44 (0)1635 239 800
sales@centrixsoftware.com
www.centrixsoftware.com

Unified end-user computing

Centrix Software provides solutions that optimize the way IT infrastructures deliver applications and content; whether physical, virtual, hosted or web. Headquartered in Newbury, Berkshire, Centrix Software's customers include leading organizations in banking and securities, insurance, telecommunications, retail, manufacturing, pharmaceutical, energy and utilities, and within public sector. Centrix Software's solutions are available through a network of value-add partners.